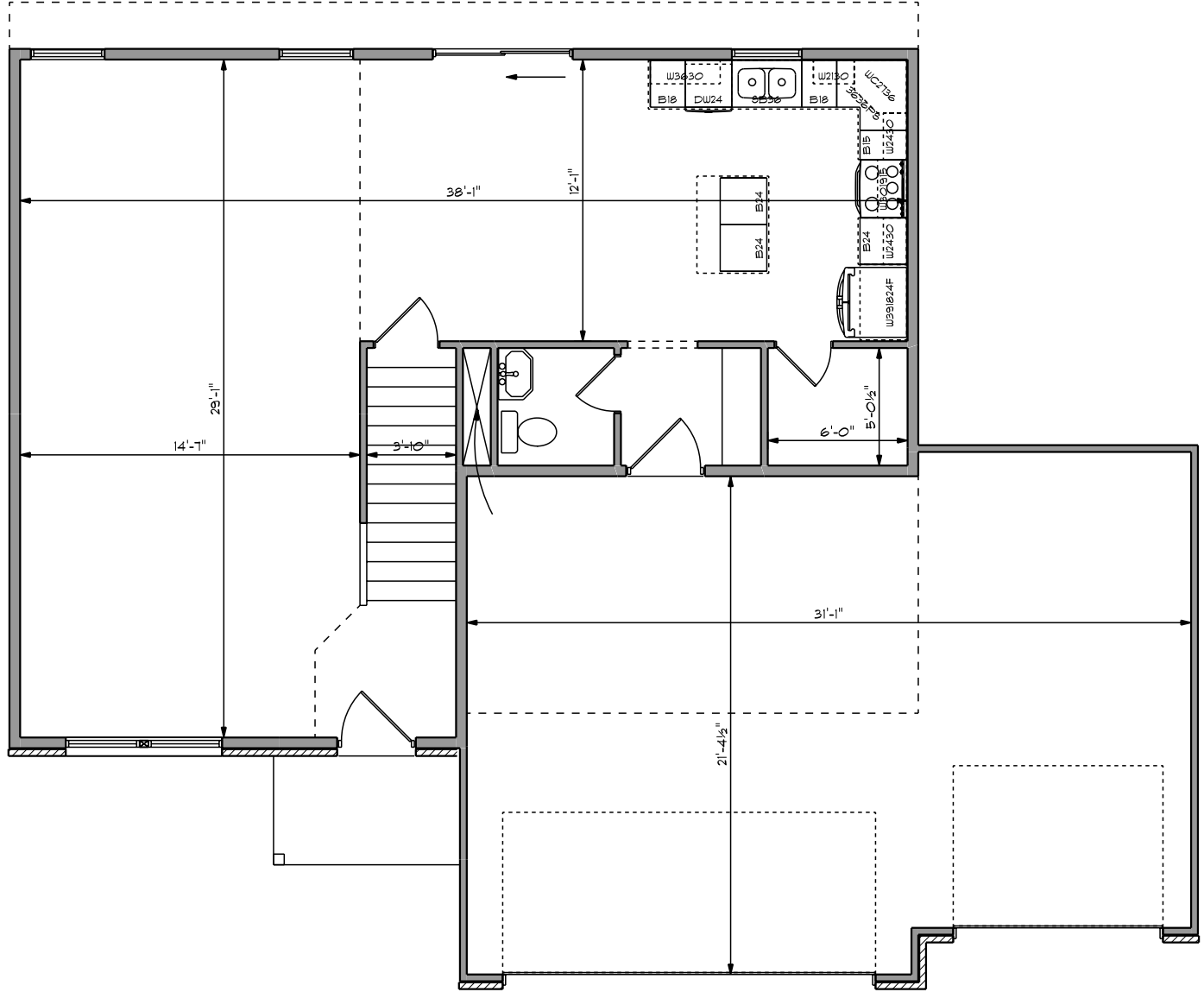
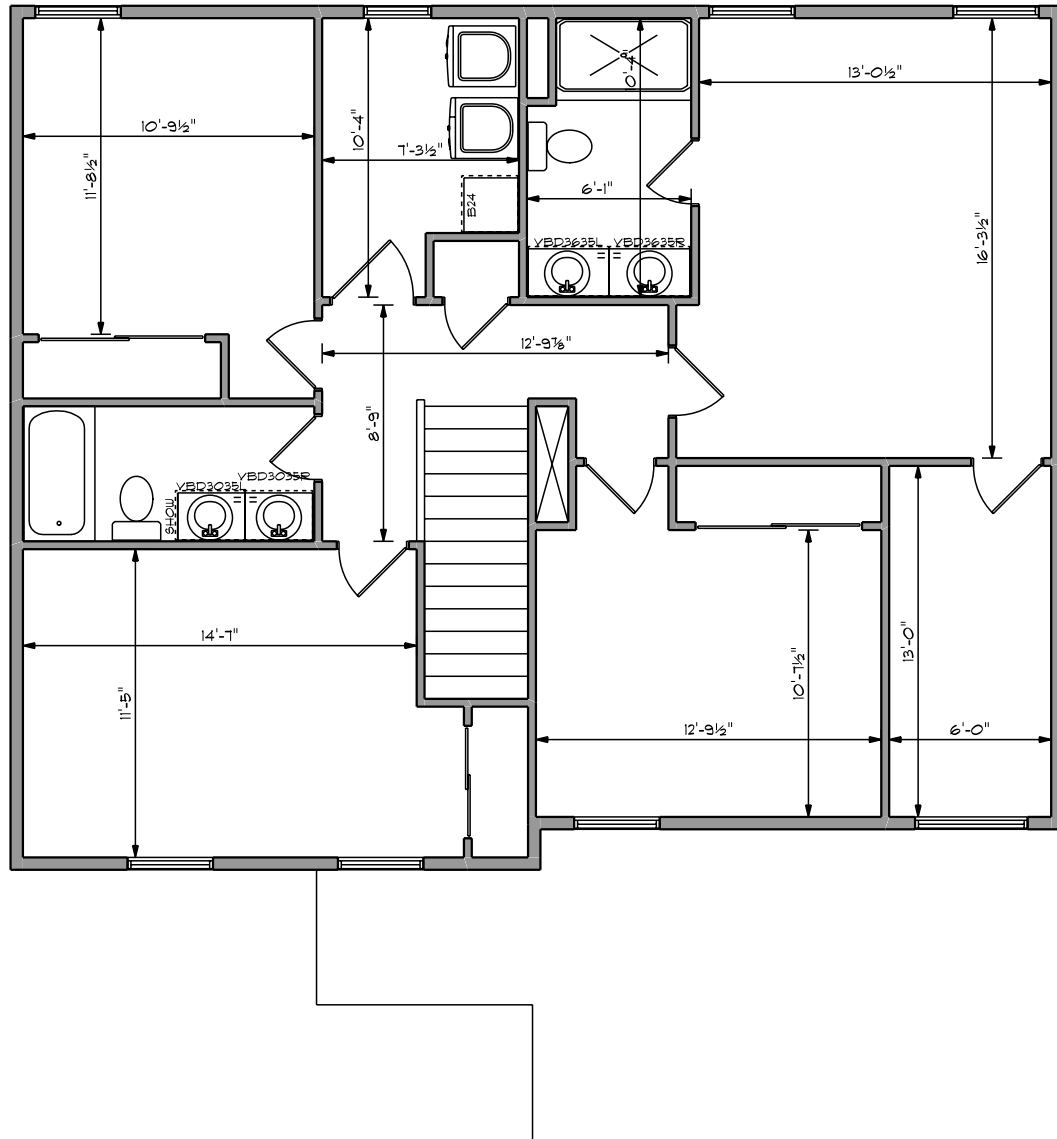


NAME	COLOR	AREA
First Floor Finished	■	944 sq ft.
Second Floor Finished	■	1177 sq ft.
Basement Finished	■	766 sq ft.

NAME	COLOR	AREA
First Floor Finished	<span style="display:inline-block; width:10px; height:10px; background-color:black;"></span>	944 sq ft.
Second Floor Finished	<span style="display:inline-block; width:10px; height:10px; background-color:black;"></span>	1177 sq ft.
Basement Finished	<span style="display:inline-block; width:10px; height:10px; background-color:black;"></span>	766 sq ft.



NAME	COLOR	AREA
First Floor Finished	■	944 sq ft.
Second Floor Finished	■	1177 sq ft.
Basement Finished	■	766 sq ft.



SOD FRONT YARD.  
 SEED REAR, LEFT, AND RIGHT SIDE.  
 PLANT ONE TREE. 2.5" CIRCUMFERENCE  
 LIGHT POST IN FRONT YARD.

HOLD SIDEWALK  
 1'-0" OFF PROPERTY LINE  
 30' WIDE MAX CURB CUT  
 SIDEWALK PATTERN  
 CONTINUES THROUGH DRIVEWAY

